

High Power Laser Science and Engineering

<http://journals.cambridge.org/HPL>

Additional services for *High Power Laser Science and Engineering*:

Email alerts: [Click here](#)

Subscriptions: [Click here](#)

Commercial reprints: [Click here](#)

Terms of use : [Click here](#)



A study on low emittance injector and undulator for PAL-XFEL

J. Hong, J.-H. Han, S.J. Park, Y.G. Jung, D.E. Kim, H.-S. Kang and J. Pflueger

High Power Laser Science and Engineering / Volume 3 / 2015 / e21

DOI: 10.1017/hpl.2015.18, Published online: 17 July 2015

Link to this article: http://journals.cambridge.org/abstract_S2095471915000183

How to cite this article:

J. Hong, J.-H. Han, S.J. Park, Y.G. Jung, D.E. Kim, H.-S. Kang and J. Pflueger (2015). A study on low emittance injector and undulator for PAL-XFEL. High Power Laser Science and Engineering, 3, e21 doi:10.1017/hpl.2015.18

This article belongs to a collection: [Free Electron Lasers](#)

Request Permissions : [Click here](#)

A study on low emittance injector and undulator for PAL-XFEL

J. Hong¹, J.-H. Han¹, S.J. Park¹, Y.G. Jung¹, D.E. Kim¹, H.-S. Kang¹, and J. Pflueger²

¹Pohang Accelerator Laboratory, Pohang, Gyeongbuk 790-834, South Korea

²European XFEL, Notkestrasse 85, 22607 Hamburg, Germany

(Received 30 March 2015; revised 30 April 2015; accepted 20 May 2015)

Abstract

For the success of PAL-XFEL, two critical systems, namely a low emittance injector and a variable gap out-vacuum undulator, are under development. In order to realize the target emittance of the PAL-XFEL injector we carried out an optimization study of various parameters, such as the laser beam transverse profile, the laser pulse length, the laser phase, and the gun energy. The transverse emittance measured at the Injector Test Facility (ITF) is $\varepsilon_x = 0.48 \pm 0.01$ mm mrad. An undulator prototype based on the EU-XFEL design and modified for PAL-XFEL was built and tested. A local- K pole tuning procedure was developed and tested. A significant reduction (90%) of the local- K fluctuation was observed. The requirement of undulator field reproducibility better than 2×10^{-4} and the undulator gap setting accuracy below $1 \mu\text{m}$ were achieved for the prototype. The optical phase jitter after the pole height tuning at the tuning gap was calculated to be 2.6° rms, which satisfies the requirement of 5.0° .

Keywords: emittance; free-electron lasers (FELs); photocathode RF-gun; undulator

1. Introduction

The Pohang Accelerator Laboratory (PAL), Pohang, South Korea, is developing a 0.1 nm SASE based free-electron laser (FEL), named PAL-XFEL, for high power, short pulse X-ray coherent photon sources. It is adjacent to the existing third-generation light source, PLS-II, which was upgraded to a 3 GeV/400 mA/6 nm facility in 2010 (see Figure 1). The PAL-XFEL project was started in 2011 with a five-year total budget of 400 million US dollar, its building construction was completed by the end of 2014, and successively the installation of linac, undulator and beamline followed and will be completed by the end of 2015. The FEL commissioning will be started in early 2016.

The PAL-XFEL includes a 10 GeV S-band normal conducting linac consisting of a photocathode RF-gun, 174 accelerating structures with 50 klystrons and modulators, one X-band system for linearization, and three bunch compressors (see Table 1). Beyond the 10 GeV linac, a 250 m long hard X-ray undulator hall follows. An experimental hall, which is 60 m long and 16 m wide, is located at the end of the facility. The total length of the building is 1110 m.

Among the five available undulator lines in the undulator halls, only two undulator lines will be prepared during

the construction period 2011–2105: a hard X-ray FEL line (HX1) with 18 undulators and a soft X-ray FEL line (SX1) with eight undulators, as shown in Figure 2. HX1 covers the wavelength range $\lambda = 0.06\text{--}0.6$ nm using a 4–10 GeV electron beam and uses linear polarization, variable gap, out-vacuum undulators. SX1 covers the wavelength range $\lambda = 1.0\text{--}4.5$ nm using a 3.15 GeV electron beam. In SX1, two elliptically polarized undulators (EPUs) following six planar undulators will be used for polarization control at the final stages of lasing. Sufficient space is reserved in the undulator halls for a future upgrade to house a total of 28 undulators for HX1 and 15 undulators for SX1.

Linac RF conditioning and injector commissioning are scheduled between October and December 2015. The first XFEL commissioning for HX1 is scheduled in early 2016, aiming for 0.3 nm radiation with a 6 GeV beam at 10 Hz. The second FEL commissioning is scheduled between September and December 2016 for the 0.1 nm hard X-ray FEL.

For the success of PAL-XFEL, two critical systems, namely a low emittance injector and a variable gap out-vacuum undulator, are being developed^[1]. The smaller the beam emittance from the injector, the shorter the saturation length is in the undulators, giving a higher radiation power generated through the SASE process. The requirement of undulator field accuracy is better than 2×10^{-4} and the

Correspondence to: H.-S. Kang, Pohang Accelerator Laboratory, 80 Jigokro-127-beongil, Nam-gu, Pohang, Gyeongbuk 790-834, South Korea. Email: hs kang@postech.ac.kr



Figure 1. Construction site of PAL-XFEL.

Table 1. Parameters of PAL-XFEL.

Linac	
FEL radiation wavelength	0.1 nm
Electron energy	10 GeV
Normalized emittance at injector	0.5 mm mrad
Bunch charge	0.2 nC
Peak current at undulator	3.0 kA
Pulse repetition rate	60 Hz (120 Hz for 6.5 GeV)
Electron source	Photocathode RF-gun
Linac structure	S-band normal conducting
Undulator	
Type	Out-vacuum, variable gap
Length	5 m
Undulator period	2.6 cm
Undulator min. gap	8.3 mm
Vacuum chamber dimension	6.7×13.4 (mm)

undulator gap setting accuracy should be below $1 \mu\text{m}$, which are challenging issues not easy to realize.

At the beginning of the PAL-XFEL project in 2011, the Injector Test Facility (ITF) was built in the extended building of the PLS injector linac (see Figure 3). The ITF has the same configuration as the injector of the PAL-XFEL, which consists of a photocathode RF-gun, two 3 m long S-band constant gradient traveling-wave structures, and a laser

heater. The ITF has been operational since 2012 for low emittance injector R&D.

In this paper we report recent beam measurement results using the RF-gun at ITF and the test result of a prototype of the undulator.

2. Low emittance injector

2.1. ITF

The PAL-XFEL baseline gun developed at PAL is a 1.6-cell structure with four holes on the second cell, two of which are for RF power coupling and the others for vacuum ports (see Figure 4). Both cells have a round shape. Two RF input holes are made with mirror symmetry to minimize the dipole component of the RF field, and two additional pumping holes are used to reduce the quadrupole component^[2]. The peak accelerating field at the cathode is designed to be 120 MV m^{-1} and the beam energy at the gun exit is 5.7 MeV ^[3].

The cavity body was made by diamond machining oxygen-free copper. RF tuning was mainly done by controlling the cell length before the final brazing. The first gun used for the ITF was the gun fabricated in 2011. An improved gun, named Gun1-0, in terms of brazing and tuning process was fabricated in spring 2013. Gun1-0 was used for the ITF beam operation from summer 2013 to summer 2014. In September 2014, another gun, named Gun1-1, was installed at ITF. This gun will be used later for PAL-XFEL beam commissioning.

Oxygen-free copper, which is part of the gun cavity back plane, is used as photocathode. At nominal operating condition, a quantum efficiency (QE) of the order of 10^{-5} is measured. Laser cleaning was tried using an IR (760 nm) laser pulse as well as a UV (253 nm) laser pulse. An IR laser pulse with a length of hundreds of ps has been found to be most useful up to now. After the IR laser cleaning, the QE of the cathode recovered from 4.0×10^{-5} to 1.3×10^{-4} and was maintained for a few months^[4].

The laser system is a commercial regenerative Ti:sapphire amplifier from Coherent Inc^[5]. The pulsing rate of the seed laser (Coherent Mira) is set to 79.333 MHz, which

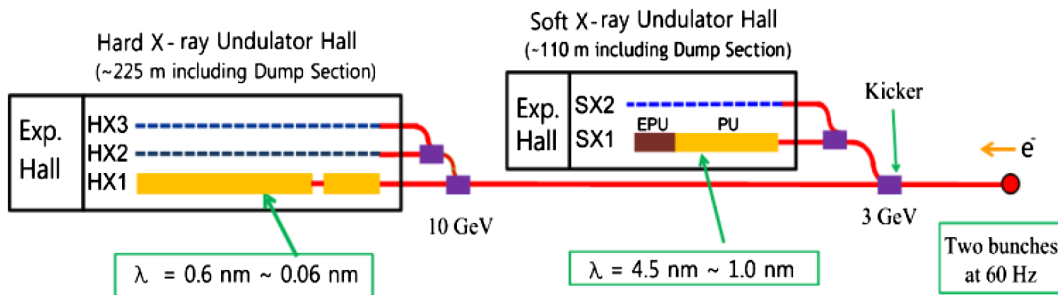


Figure 2. FEL undulator line plan of PAL-XFEL.



Figure 3. ITF.

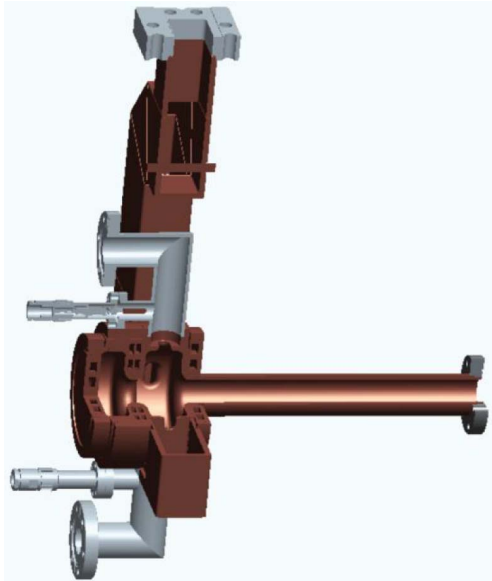


Figure 4. Baseline gun for PAL-XFEL.

is synchronized to the master oscillator. A regenerative amplifier (Coherent Legend Elite) is used to generate a preamplified output with a 150 ps pulse length and a 120 Hz repetition rate. A post-power amplifier is employed to boost the output power up to 2.5 W with an rms jitter of 0.24%. The center wavelength of 770 nm is tripled to 257 nm for beam generation at the gun cathode. Various UV pulse lengths are used for electron beam generation.

A schematic diagram of the ITF beamline is shown in Figure 5. The detailed system parameters and typical electron beam parameters are described in Table 2. The emittance compensation solenoid ('S1') downstream of the 'GUN' enables the correction of space charge emittance growth. A Turbo Integrating Current Transformer ('ICT1') downstream

Table 2. Nominal operation parameters of ITF.

Laser beam at cathode	
Longitudinal profile	Gaussian
FWHM length	3 ps
Transverse size (rms)	0.2 mm
Gun	
Peak field at cathode	120 MV m ⁻¹
Beam launch phase from 0-crossing	38
Accelerating section	
Gradient of first section	21 MV m ⁻¹
Gradient of second section	24 MV m ⁻¹
Phase of first section from on-crest	10
Phase of second section from on-crest	0
Nominal electron beam	
Bunch charge	200 pC
FWHM bunch length	3 ps
Mean energy	137 MeV

of the solenoid measures the electron bunch charge. A YAG screen #1 ('Y1') is located downstream of 'ICT1' to measure the transverse beam profile. Then the electron beam is accelerated up to 140 MeV by two 3 m J-type S-band structures ('ACC1' and 'ACC2'). After acceleration the emittance is measured using the quadrupole #3 ('Q3') and the screen #5 ('Y5').

The beam size is measured by using YAG crystals imaged with CCD cameras for image processing. The images are acquired with a 14-bit CCD camera synced to the electron beam pulse. The lens was set to give a calibration factor of 8 μm per pixel, which is a compromise between capturing the full variation of the beam size and maximizing the resolution of smallest spot size. Typically, five images of the beam transverse profile are taken for each measurement. Typical images of each screen are shown in Figure 6.

Projected emittance is measured by scanning the strength of the quadrupole Q3^[6]. The beam transverse profile is measured using the screen Y5 immediately upstream of the spectrometer dipole D2. The distance between the quadrupole and the screen is 2.6 m. The measured emittance is normalized by the beam energy measured with the spectrometer dipole D2.

Bunch charge is measured by using the ICT1. The QE of the photocathode is defined by the ratio of generated electrons and photons hitting the cathode surface. The measured QE of the copper cathode is 1.26×10^{-4} . We also measure the bunch charge as a function of laser injection phase for three different bunch charges, as shown in Figure 7. Beam energies and their spreads as a function of injection phase are measured with the energy spectrometer ('D2' + 'Y6') (see Figure 8). In Figure 8, dashed lines represent the measurement and solid lines represent the calculated values. The relative beam energy spread for a laser injection phase around 40° is about 0.1% rms.

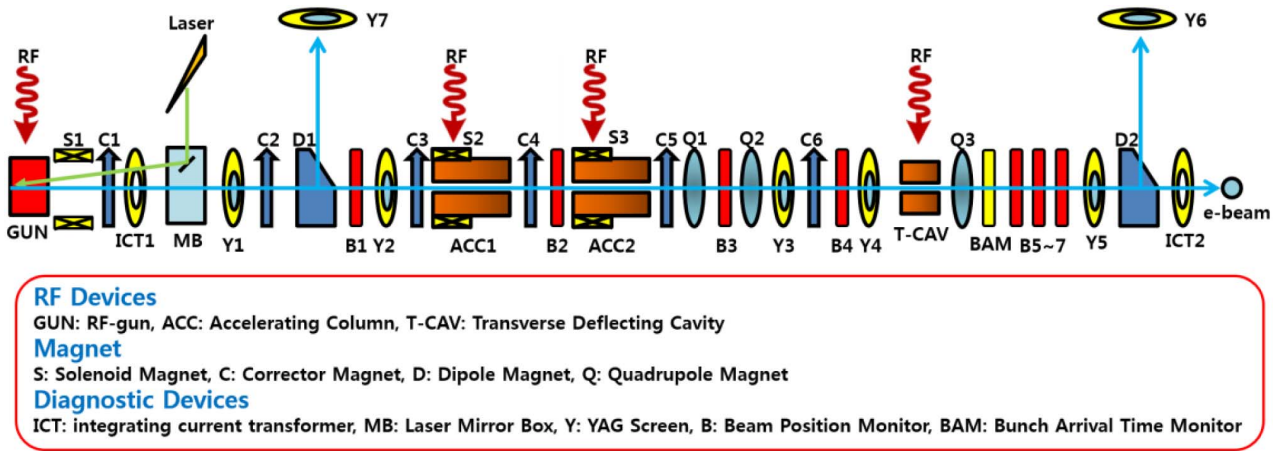


Figure 5. A schematic diagram of the ITF beamline.

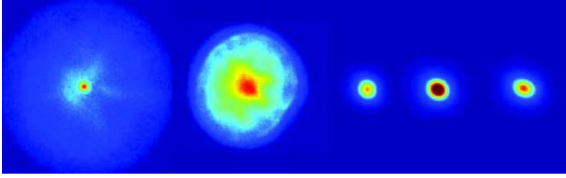


Figure 6. Typical images of five screens (left to right: 'Y1' to 'Y5').

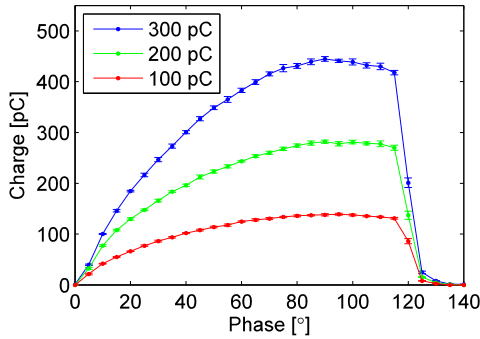


Figure 7. Measured bunch charge versus laser injection phase for three different bunch charges.

2.2. Emittance measurement

In order to realize the target emittance of the PAL-XFEL injector an optimization study was carried out for various parameters, such as the laser beam transverse profile, laser pulse length, laser injection phase and gun energy.

The projected emittance of the electron beam is measured downstream of 'ACC2' using the single quad-scan technique, whereby the rms beam size, σ is measured at the screen 'Y5' as the quadrupole strength, k , of 'Q3' is varied. Emittance measurements were done with 200 pC of charge using a longitudinally Gaussian distribution pulse with a FWHM of 3 ps, laser phase of 40°, gun energy of 5.75 MeV, and -10° off-crest acceleration in 'ACC1' with an accelerating field

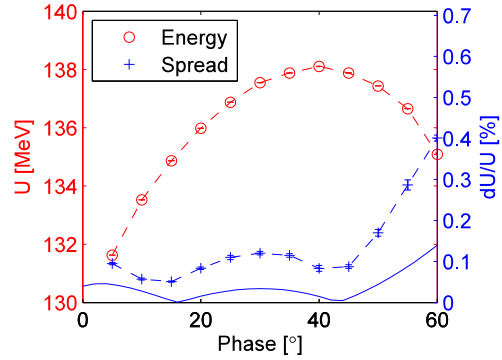


Figure 8. Electron energy and energy spread versus laser injection phase measured at the spectrometer D2.

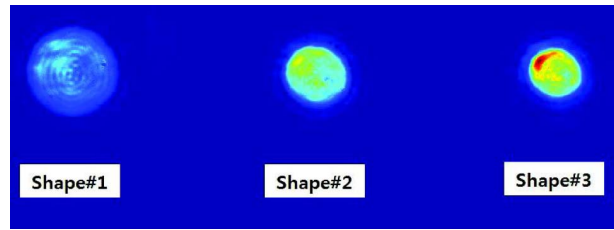


Figure 9. Three different transverse shapes of laser beam: Shape #1, #2 and #3.

gradient of 21 MV m^{-1} . In these measurement, the QE of the copper cathode is 1.26×10^{-4} .

Figure 9 shows the three different transverse shapes of laser beam for the emittance measurement to determine the best shape. Figure 10 depicts the emittance as a function of the gun solenoid 'S1' current for three different transverse shapes of laser beam. The transverse shape #3 of laser beam is selected as the best among the three shapes.

Figure 11 depicts the emittance as a function of the gun solenoid 'S1' current for three different laser injection phases in the case of the laser beam transverse shape #2. The laser

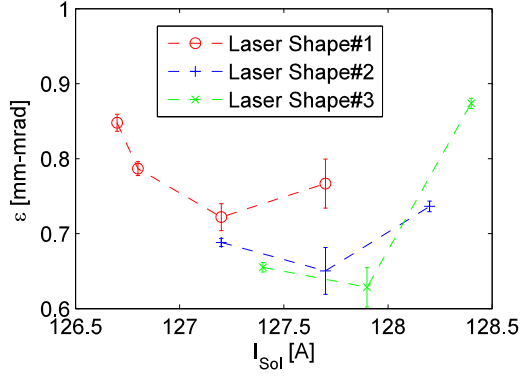


Figure 10. Emittance as a function of the gun solenoid current for three different shapes of laser beam.

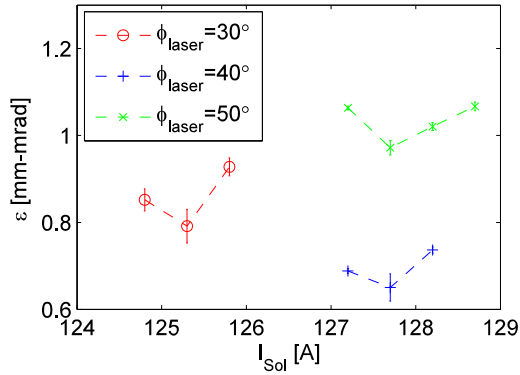


Figure 11. Emittance as a function of the gun solenoid current for three different laser injection phases using the laser beam transverse shape #2.

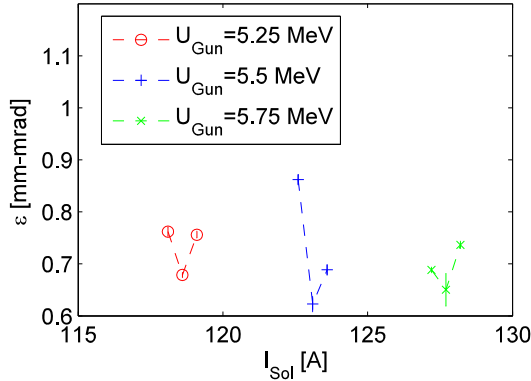


Figure 12. Emittance as a function of the gun solenoid current for three different beam energies using the laser beam transverse shape #2.

injection phase of 40° is selected as the best among the three laser injection phases. The emittances as a function of the gun solenoid ‘S1’ current for three RF-gun energies of 5.25, 5.5 and 5.75 MeV are shown in Figure 12. The RF-gun energy of 5.5 MeV is selected as the best among the three beam energies.

The emittance as a function of the solenoid ‘S1’ current for three different laser pulse lengths of 2, 3 and 4 ps

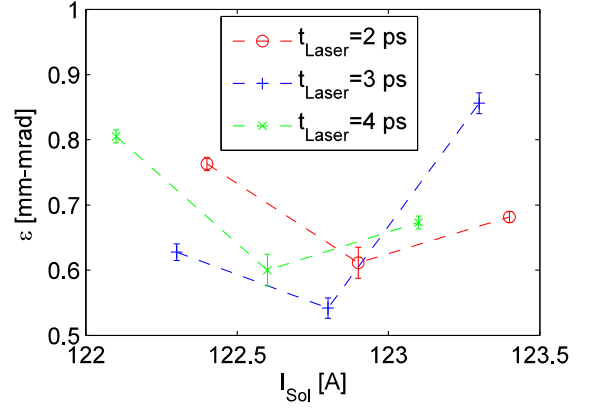


Figure 13. Emittance as a function of the gun solenoid current for three different bunch lengths in the case of an RF-gun energy of 5.5 MeV.

Table 3. Major parameters of the HXU undulator.

Symbol	Unit	Old parameters	New parameters
E	GeV	10	10
g	mm	7.2	8.3
λ_u	mm	24.4	26.0
L_{und}	m	5.0	5.0
λ_r	nm	0.1	0.1
B_{eff}	T	0.9076	0.8124
K		2.0683	1.9727
Optical phase error	deg.	<5.0	<5.0

are shown in Figure 13. The laser pulse length of 3 ps shows as the best among the three pulse lengths, unlike the simulation result showing the longest pulse as the best. In the numerical simulation using the ASTRA code the electron beam generated with a 5 ps laser pulse length has a smaller emittance than that of the 3 ps case^[7]. Through this optimization study, the transverse emittances measured at the ITF are $\varepsilon_x = 0.481 \pm 0.010$ mm mrad and $\varepsilon_y = 0.597 \pm 0.020$ mm mrad. The horizontal emittance meets the specification, while the vertical emittance does not. A further optimization study is ongoing to reduce the emittance to below 0.5 mm mrad.

3. Undulator

For the PAL-XFEL, two undulator systems are under construction: 18 planar undulators for the hard X-ray line (called HXU) and six planar undulators with two additional EPUs for the soft X-ray line (called SXU). The two EPUs will be used for polarization control and installed at the end as the final stages of lasing. The major parameters of the HXU line were changed recently and the updated parameters are shown in Table 3. Changes include an increase of the minimum magnetic gap from 7.2 to 8.3 mm and a corresponding increase of the period length from 24.4 to 26.0 mm so that the radiation wavelength is unchanged at 0.1 nm at 10 GeV

electron beam energy. The parameters of the EPU are under study now, and the magnetic pole gap is 10.0 mm with a 44.0 mm magnetic period to match the resonance condition with the planar hybrid undulator for the soft X-ray undulator lines.

For the PAL-XFEL undulators, the EU-XFEL design and technology^[8–10] was adopted and further developed. The EU-XFEL design is well proven using standardization and optimization for mass serial production^[9, 10] and was successfully used for the production of 91 undulators for the EU-XFEL.

The PAL-XFEL undulator is benchmarking the conceptual details of EU-XFEL undulators. Its key properties are:

- (a) There is one standard mechanical system to be used for all planar undulators. It is designed for worst case magnetic loads and allows its use for both HXU and SXU without restrictions.
- (b) In order to minimize girder deformation under magnetic loads, four support points are provided. Temperature-dependent bimetallic deformation is consequently avoided by careful material pairing.
- (c) A state-of-the-art control system is used for motion control and device supervision. It is completely based on industrial components, which are available off the shelf.
- (d) The gap is changed by four independent spindles with servo motors, which are synchronized electronically.
- (e) The true gap is measured with two absolute linear encoders on both ends. They are used for the feedback of the motion control.
- (f) EU-XFEL type Pole Height Tuning is used. The poles can be shifted by about $\pm 300 \mu\text{m}$ and tilted by $\pm 4 \text{ mrad}$ using tuning studs and locking screws. This is a big advance as compared to using conventional magnetic and/or non-magnetic shims. In contrast to shims, Pole Height Tuning is bi-polar and continuous. Magnetic shims are unipolar and only weaken poles. In addition they are only available in discrete steps. By using Pole Height Tuning an undulator can be readily pre-assembled at a supplier. Provided that suitable a magnetic measurement facility is available the tuning is readily done in house.

At PAL a full scale prototype undulator was built. It is based on the EU-XFEL concept with some modifications reflecting different magnetic periods and pole gaps. In addition, precision tilt meters were attached to the girders to monitor parallel motion. Unfortunately this prototype is based on the old magnetic period of 24.4 mm and old magnetic gap of 7.2 mm. But it is, however, a good test bed to check the mechanical integrity and to develop the



Figure 14. Prototype HX undulator undergoing the pole tuning procedure.

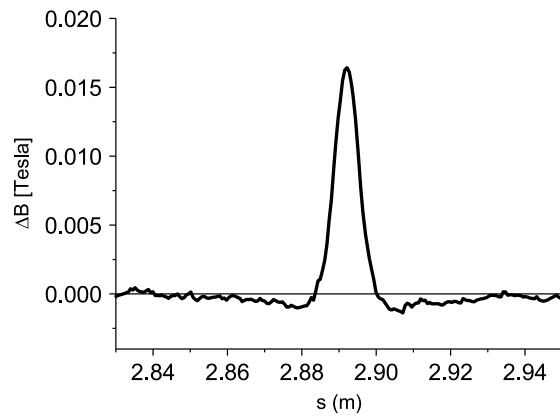


Figure 15. Measured effects of 100 μm pole tuning at a 9.5 mm tuning gap. The residual fluctuation comes from the longitudinal positional error at the probe position, which is estimated to be about 3.0 μm .

entire pole tuning scheme. This prototype undulator is shown on the measurement bench in Figure 14. The completed undulator was mechanically tested by installing a precision external gap sensor comparing the rotary encoder values and the actual gaps.

Hall scanning measurements and experiments to acquire the pole tuning effects as well as pole tuning experiments to improve the orbit and optical phase errors are being carried out. The field change for pole tuning height of 100 μm at a 9.5 mm gap is shown in Figure 15. A 9.5 mm gap is chosen as the tuning gap to optimize the old parameter undulator for the whole working range of the undulator gap, which is 7.2 to 12.0 mm. The effect of pole height is measured to be linear: the 100 μm result is twice that of 50 μm . The background fluctuation between the poles is $\approx \pm 5 \times 10^{-4}$. It can be explained by a random positioning error of the Hall probe during the measurements of only about 3.0 μm . The field change under the tuned pole is largest. But there is an effect with opposite sign on the direct neighbor poles. This effect is small in amplitude but not in importance. The whole area on both sides has to be taken into account.

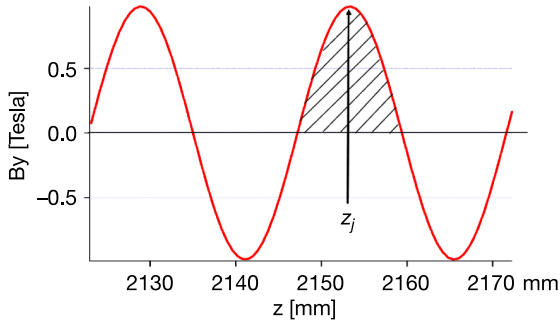


Figure 16. Integration over a half-period around the j th pole/peak position for the definition of the local- K parameter.

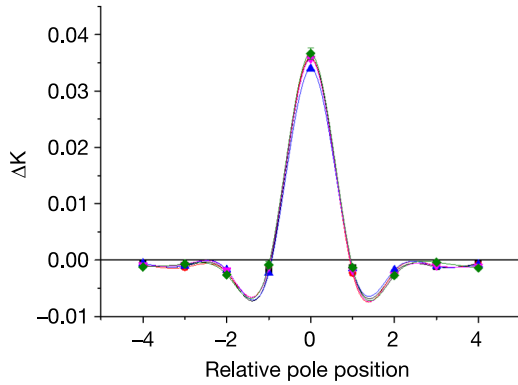


Figure 17. The measured local- K changes due to a $100\ \mu\text{m}$ pole correction at the $9.5\ \text{mm}$ tuning gap. The abscissa denotes the distance to the pole: 0 is the tuned pole itself, ± 1 the two next-neighbor poles etc.

For deeper analysis, field measurements need to be analyzed. First, for each pole a local K is defined for each pole using the following definition^[11, 12]:

$$K_j = \frac{2e}{mc} \int_{z_j - (\lambda_u/4)}^{z_j + (\lambda_u/4)} B_y(z) dz$$

This is a half-period field integral around the j th pole of the field profile. Fluctuations of local K from the average describe the error. An illustration of this equation is given in Figure 16.

Second, several measurements are carried out to extract the impact of pole tuning on the changes of local K . In Figure 17, the measured local- K changes resulting from pole tuning by $100\ \mu\text{m}$ are shown for the tuning gap. The abscissa denotes the relative position: 0 is the tuned pole itself, ± 1 the two next-neighbor poles etc. Measurements at five different positions are plotted, together with the standard deviation. The calculated signatures are averaged and symmetrized, then used to calculate the required corrections.

Third, the corrections are calculated as described in Ref. [13]. A linear system of equations is set up connecting the pole shift on pole with index j to the local- K change on pole with index i .

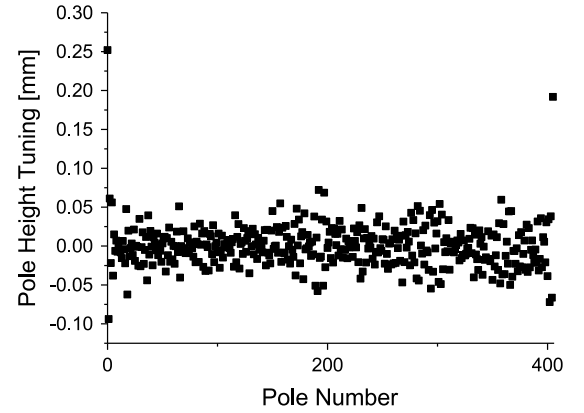


Figure 18. Calculated pole gap correction based on the initial magnetic measurement and local- K deviation. Most of poles need correction. The majority of those poles need a correction less than $50\ \mu\text{m}$, some of them needed $100\ \mu\text{m}$ corrections. Except for the entrance and exit poles, which require larger correction, none are above this limit.

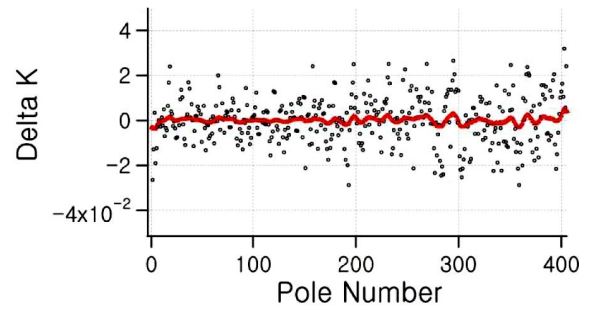


Figure 19. Deviation of local K for each pole before (black) and after pole tuning (red). The standard deviation before correction was 1.32×10^{-2} , reduced to 1.3×10^{-3} after correction.

For 203 periods there are 406 poles, resulting in a 406 by 406 system matrix. Since only three next-nearest neighbors are used, the matrix is diagonally dominant and there are only six side diagonals. This facilitates the solution and allows an iterative solution.

The results of the calculation are shown in Figure 18. Most of the poles need corrections within $\pm 50\ \mu\text{m}$, a small number of the poles need up to $\pm 100\ \mu\text{m}$ pole correction, while none apart from the entrance and exit poles are above this figure. The effect of the pole tuning is demonstrated in Figure 19. The local K s before (black dots) and after the tuning (red line) are shown. The RMS variation of the local K dropped by an order of magnitude, from 1.32×10^{-2} before to 1.3×10^{-3} after the correction. Obviously the accuracy of the final K fluctuation depends on the measurement accuracy and the accuracy of the pole height tuning.

Finally, Figure 20 shows the measurement of gap reproducibility. Measurement is repeated six times and the peak fields of the each positive pole are calculated. The difference in the peak field between the measurements is calculated and shown in the figure. Between each measurement the

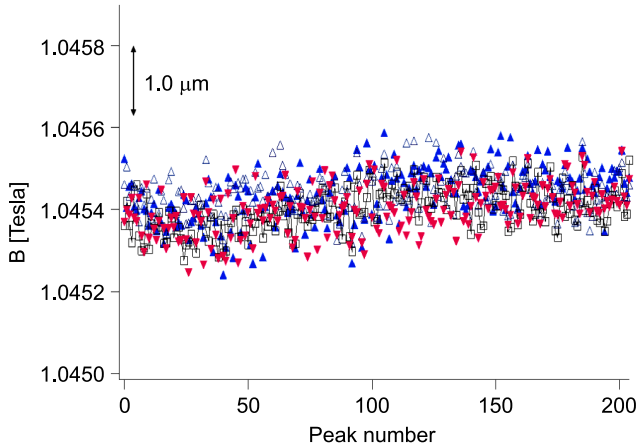


Figure 20. Measurement of gap reproducibility errors.

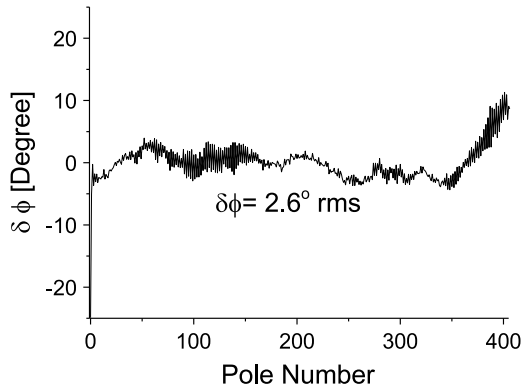


Figure 21. Optical phase error at the working gap of 9.5 mm. The rms phase jitter is 2.6° , which is within the specification of 5.0° .

gap was opened to 100 mm and closed to the measurement gap of 7.2 mm. The data scatter in the peak field is about ± 1.5 G maximum. This difference translates to an approximate ± 1.0 μm gap error. This error includes the mechanical hysteresis of the gap and the magnetic hysteresis of the pole, and is within our specification. Figure 21 shows the calculated phase jitter after pole tuning. The calculated rms phase jitter was 2.6° rms, which is less than the specification of 5.0° . The phase jitter increases when the gap moves away from the tuning gap, but is still within the specification within the working gap (see Figure 22).

4. Conclusion

In order to realize the target emittance of the PAL-XFEL injector an optimization study was carried out for various parameters, such as the laser beam transverse profile, laser pulse length, laser injection phase and gun energy. The transverse emittances measured at the ITF are $\varepsilon_x = 0.481 \pm 0.010$ mm mrad and $\varepsilon_y = 0.597 \pm 0.020$ mm mrad. An undulator prototype based on the EU-XFEL design and modified for PAL-XFEL was built and tested. The local- K

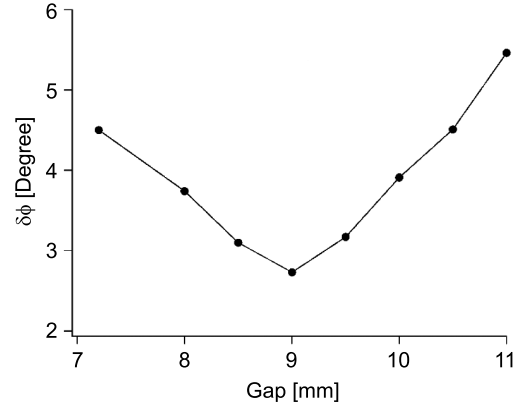


Figure 22. Gap dependence of the optical phase error.

pole tuning procedure was developed and tested. For the field corrections the three next-nearest neighbors were included into the correction signatures. Tuning was very effective, reducing the local- K fluctuations by one order of magnitude. The major source of measurement errors is likely to come from the longitudinal positional error of the Hall probe during measurements. It has been demonstrated that gap setting can be tuned to ± 1 μm , corresponding to a field reproducibility better than 2×10^{-4} . This is considered sufficient for FEL operation. Moreover, measurements done at other gaps show that the undulator meets the phase jitter specs for all working gaps.

Acknowledgement

This research has been supported by the Ministry of Science, ICT and Future Planning of Korea.

References

1. H.-S. Kang, J.-H. Han, C. B. Kim, D. E. Kim, S. H. Kim, H.-S. Lee, K.-H. Park, S.-J. Park, T.-H. Kang, and I. S. Ko, in *Proceedings of IPAC'13* (2013), p. 2076.
2. M. Chae, J. H. Hong, Y. W. Parc, I. S. Ko, S. J. Park, H. J. Qian, W. H. Huang, and C. X. Tang, *Phys. Rev. ST Accel. Beams* **14**, 104203 (2011).
3. J. Hong, J.-H. Han, C.-K. Min, M. S. Chae, Y.-J. Park, S.-J. Park, and H.-S. Kang, in *Proceedings of 36th International Free-Electron Laser Conference* (2014), THP011.
4. C.-K. Min, J. Hong, and M. Chae, PAL-PUB/2014-001 (2014).
5. C.-K. Min, I. Y. Kim, I. T. Eom, and J. Hong, PAL-PUB/2014-002 (2014).
6. M. Chae, J. Hong, J.-H. Han, S.-J. Park, and I. S. Ko, in *Proceedings of 34th International Free-Electron Laser Conference* (2012), p. 117.
7. K. Flöttmann, ver. 3.0, http://www.desy.de/~mpyflo/Astra_dokumentation/.
8. M. Altarelli, R. Brinkmann, M. Chergui, W. Decking, B. Dobson, S. Düsterer, G. Grübel, W. Graeff, H. Graafsma,

- J. Hajdu, J. Marangos, J. Pflüger, H. Redlin, D. Riley, I. Robinson, J. Rossbach, A. Schwarz, K. Tiedtke, T. Tschentscher, I. Vartanians, H. Wabnitz, H. Weise, R. Wichmann, K. Witte, A. Wolf, M. Wulff, and M. Yurkov, Technical Design Report, ISBN 3-935702-17-5, 2006. http://www.xfel.eu/dokumente/technical_documents.
9. U. Englisch, Y. Li, and J. Pflueger, in *Proceedings of 34th International Free-Electron Laser Conference (2012)*, p. 579.
 10. J. Pflueger, M. Bagha-Shanjani, K. Berndgen, A. Beckmann, P. Biermordt, G. Deron, U. Englisch, S. Karabekyan, B. Ketenoglu, M. Knoll, Y. Li, F. Wolff-Fabris, and M. Yakopov, in *Proceedings of the FEL2013 (2013)*, p. 376.
 11. Y. Li, S. Abeghyan, K. Berndgen, M. Baha-Shanjani, G. Deron, U. Englisch, S. Karabekyan, B. Ketenoglu, M. Knoll, F. Wolff-Fabris, M. Viehweger, M. Yakopov, and J. Pflueger, *Synchrotron Radiat. News* **28**, 23 (2015).
 12. Y. Li and J. Pflueger, *Phys. Rev. ST Accel. Beams* **18**, 030703 (2015).
 13. J. Pflueger, H. Lu, and T. Teichmann, *Nucl. Instrum. Methods A* **429**, 386 (1999).