

Extended Omega-k algorithm for synthetic aperture radar imaging in multi-layer medium

ZHENG Hai-Tao^{1*}, LI Shi-Yong¹, James DO.², SUN Hou-Jun¹, LIU Xiao-Guang²

- (1. Dept. of Electronic Engineering, Beijing Institute of Technology, Beijing 100081, China;
2. Dept. of Electrical and Computer Engineering, University of California, Davis, CA 95616, United States)

Abstract: Processing ground penetrating radar data to obtain well-focused images for object detection has been an active research area. Phase-shift migration (PSM) is a widely used method since it allows the wave velocity to vary with respect to multi-layer medium. However, this requires pixel-by-pixel calculation of the image, which is time-consuming. This paper presents an extended Omega-k algorithm for multi-layer medium imaging with significantly less computation complexity than the PSM algorithm. The extended Omega-k exploits fast interpolation in the wave-number domain instead of iterative calculating as done by PSM. The method of estimating the wave propagation velocity in different media is also proposed via vertex region extraction for phase compensation and image focusing. Various images of buried targets of a two-layer medium experiment are obtained, which validate the effectiveness of the proposed algorithm, and make it practical for some typical ground-based surveillance applications.

Key words: ground-penetrating radar, phase migration, extended Omega-k, velocity estimation

PACS: 84. 40. Xb

用于多层介质目标成像的改进波数域算法

郑海涛^{1*}, 李世勇¹, James DO², 孙厚军¹, 刘晓光²

- (1. 北京理工大学信息与电子学院, 北京 100081;
2. 加州大学戴维斯分校电子与计算机工程, 戴维斯, 加州 95616, 美国)

摘要: 近年来, 获取高分辨率探地雷达图像以实现目标检测受到广泛关注。相位偏移补偿算法(PSM)可以针对不同介电常数的多层介质成像, 在各领域应用广泛。受距离维像素循环计算过程影响, PSM 成像速度慢。基于 PSM 相关理论基础, 提出改进波数域的多层介质快速成像算法, 在每个独立介质层中, 通过快速傅里叶运算取代 PSM 算法中的像素迭代过程, 可以有效降低成像时间。针对双层介质模型, 提出基于目标顶点区域提取的波速估计方法, 用于精确补偿相位成像。通过搭建双层介质实验平台, 利用该算法获得了多种被埋目标高分辨图像, 验证了算法的有效性。

关键词: 探地雷达; 相位偏移补偿算法; 改进波数域算法; 速度估计

中图分类号: TN951 **文献标识码:** A

Introduction

Synthetic aperture radar (SAR) processing techniques are commonly used in radar, sonar, seismic and ultrasound imaging^[1-2]. To reduce the false alarm rate of target identification and improve the detection efficiency, it is desirable to improve the imaging resolution and

reduce the computation cost.

Among SAR processing techniques, the migration is a family of effective algorithms originated from seismic imaging^[3]. In these algorithms, the reflection signatures from recorded data are refocused back to the true target location and physical shape. For ground penetrating ra-

Received date: 2019- 02- 19, **revised date:** 2020- 03- 02

收稿日期: 2019- 02- 19, **修回日期:** 2020- 03- 02

Foundation items: Supported in part by Elrha's Humanitarian Innovation Fund programme, in part by the National Natural Science Foundation of China (61771049). This work is also under support of the Beijing Key Laboratory of Millimeter Wave and Terahertz Technology.

Biography: ZHENG Hai-Tao (1990-), male, Jiangsu, doctor. Research area involves near-field 3D SAR imaging algorithms, MIMO radar imaging, and personal security checking systems.

* **Corresponding author:** E-mail: zhenghaitaobit@hotmail.com

dar (GPR) employing, conventional SAR imaging techniques, in particular the back-projection (BP) method, can be used to achieve the image refocusing by the coherent summation of the back-scattered data after a proper phase compensation process^[4]. However, it is computationally expensive to apply the “delay-and-sum” approach to compensate the phase delay by solving a fourth order equation^[5].

The use of migration algorithms for GPR imaging has become popular in recent years due to the high computational efficiency of the fast Fourier transform (FFT) which enables low execution time at the cost of increased memory usage^[6-7]. However, for multi-layer medium scenarios like standoff GPR imaging, traditional Omega-k algorithm cannot be directly utilized because it requires the velocity of the electromagnetic (EM) wave to be constant. Gazdag introduced the phase shift migration (PSM) algorithm to GPR, which also operates in the wave-number domain^[7]. The PSM considers the variation of the wave propagation speed in the different mediums. However, this approach is slower than Omega-k because it calculates the wave propagation at every incremental depth repetitively and the FFT is not involved in the depth direction.

In this paper, we extend the original Omega-k algorithm to the multi-layer medium scenario, at the same time, reserving its high computational efficiency. For multi-layer geometry in which layers of homogeneous media are stacked vertically, PSM is first applied recursively to each layer boundary, and then, Omega-k is used within the layer. The algorithm exploits fast Omega-k interpolation in the spatial wave-number domain instead of iterative calculating and can be implemented for multi-layer medium imaging with known each layer depth and permittivity. For multi-layer imaging, the wave velocity estimation is necessary and need to be implemented first for lateral image reconstructions. For the standoff GPRs, methods like Hough Transform or template matching^[8-9] are no longer capable due to strong reflection and other clutter from the interface. Here, we propose a target-region-extraction method to extract the target region first and to estimate the velocity within the region with higher accuracy.

The remainder of this paper is organized as follows: The extended Omega-k (EWK) algorithm for multi-layer medium is introduced in Sect. 1. Section 2 introduces the data validation platform and presents the velocity estimation result. In Sect. 3, various experimental imaging results for buried metallic targets in sand is presented. The conclusion is given in Sect. 4.

1 Theory of proposed algorithm for multi-layer medium

Considering the imaging problem illustrated in Fig. 1, in which an antenna array is placed in medium 1 (e. g. , air) and the target resides in medium 2 (e. g. , sand). At each antenna element, a transmitter illuminates the target region and a coherent receiver measures the reflected signal. Refraction and reflection happen on

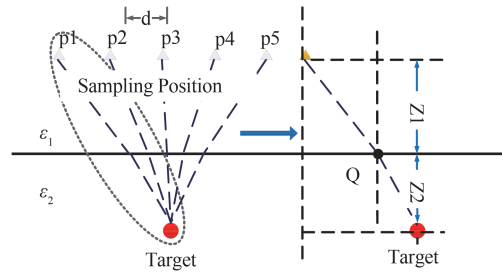


Fig. 1 Proposed Radar working configuration: p_i is radar sampling position, Q is the refraction point, and target is presented in second layer

图1 雷达工作原理示意图,其中目标位于第二层介质中,雷达采样位置为 p_i ,介质表面折射点位置为Q

layer interface due to permittivity differences between layers. An averaging method is applied to reduce sand reflection before image generation.

1.1 Review of the PSM algorithm

Migration algorithms are simplified to be an inverse problem with the assumption that the targets are the sources of the received waves. Here, we assume that all scattering targets are located in down half space medium 2, and the back reflected signal $s_r(x', y', k, Z_1)$ is recorded along each sampling position at the height Z_1 , where x' and y' are the horizontal position of the transceiver. The response at the transceiver will simply be the superposition of each point on the target multiplied by the round trip phase to that point. Then, we apply FFT over x' and y' is,

$$S(k_x, k_y, k_z, Z_1) = \iint s_r(x', y', k_z, Z_1) e^{-i(k_x x' + k_y y')} dx' dy', \quad (1)$$

where (x', y', Z_1) indicates the array position; $k_z = 2\pi f/v_1$ is wave-number of first layer, k_x and k_y represents the spatial wave-number of x' and y' respectively. We assume that the medium is isotropic and homogeneous. Therefore, we can use a single velocity for the wave propagation within each layer. For a homogeneous and lossless medium, it is obvious that $v = c/\sqrt{\epsilon_r}$, where c is speed of light in free-space and ϵ_r is the relative electric permittivity of the medium. By utilizing the principle of stationary phase^[10], Eq. 1 can be solved as,

$$S(k_x, k_y, k_z, Z_1) = \rho(x, y, z) \cdot e^{-i(k_x x - k_y y - k_{z_1}(z + Z_1))}, \quad (2)$$

where (x, y, z) is the target position, $\rho(x, y, z)$ is the reflectivity function which is simply the ratio of reflected field to incident field, and k_{z_1} is the projection of the wave number in medium 1 along the z-axis

$$k_{z_1} = \sqrt{4k_1^2 - k_x^2 - k_y^2}. \quad (3)$$

Suppose we shift down the transceiver along z-axis by Δz , the FFT at new height $Z_1 + \Delta z$ is

$$S(k_x, k_y, k_z, Z_1 + \Delta z) = \rho \cdot e^{-i(k_x x - k_y y - k_{z_1}(z + Z_1 + \Delta z))}. \quad (4)$$

By substituting Eq. 2 into Eq. 4, we can summarize the principle of PSM. In the wave-number domain, the wave of any depth of $Z_1 + \Delta z$ can be extrapolated from depth of

Z_1 by multiplication with a complex exponential:

$$S(k_x, k_y, k_1, Z_1 + \Delta z) = S(k_x, k_y, k_1, Z_1) \times e^{ik_{z_1} \Delta z}. \quad (5)$$

Finally, an inverse Fourier transform (IFFT) can be applied to obtain the extrapolated wave field at $Z_1 + \Delta z$ in space-time coordinates.

$$I(x, y, Z_1 + \Delta z) = \iiint S(k_x, k_y, k_1, Z_1) \times e^{i(k_x x + k_y y + k_{z_1} \Delta z)} dk_x dk_y dk_1. \quad (6)$$

By proper selecting Δz and using Eq. 5, we can create the image increment-by-increment until the entire depth is imaged. To precisely generate an image, the Δz increment is generally chosen to be smaller than the range resolution. When for a two-layer problem, the field cannot be extrapolated directly with different k , referring to the medium relative permittivity, but the extrapolation method within each layer is similar, which is,

$$I(x, y, Z_2 + \Delta z) = \iiint S(k_x, k_y, k_2, Z_2) \times e^{i(k_x x + k_y y + k_{z_2} \Delta z)} dk_x dk_y dk_2, \quad (7)$$

where, $S(k_x, k_y, k_2, Z_2)$ and $S(k_x, k_y, k, Z_2 + \Delta z)$ denote the field at depth Z_2 and $Z_2 + \Delta z$, respectively. The transmission factors of different media are generally a complex function, dependent on both incident angle and the impedance of the media^[8]. However, for most common GPRs, the direction of the transducer limits the emitted and received wave fields to a relatively small angle interval. Therefore, we assume that the transmission factors are approximately independent of incident angle, so that the wave fields directly above and below an interface are proportional. Thus, the wave field at the interface Z_2 can be calculated from the wave field measured at Z_1 as follows:

$$S(k_x, k_y, k_2, Z_2) \propto S(k_x, k_y, k_1, Z_1) \cdot e^{ik_{z_1} d_1}, \quad (8)$$

where, d_1 is the depth of first layer. By Eqs. 2-6, PSM can be chosen for the imaging of a two-layer model and be implemented for multi-layer medium imaging.

1.2 Proposed algorithm

It is a long execution time to create the image through PSM method. Note that for each layer, the wave velocity of the propagating medium is constant under the homogeneous assumptions. Therefore, Omega-k can be of particular interest in each layer since FFT and IFFT approach is significantly faster. According to Eq. 3, we have,

$$2k_i = \sqrt{k_x^2 + k_y^2 + k_{z_i}^2}, \quad (9)$$

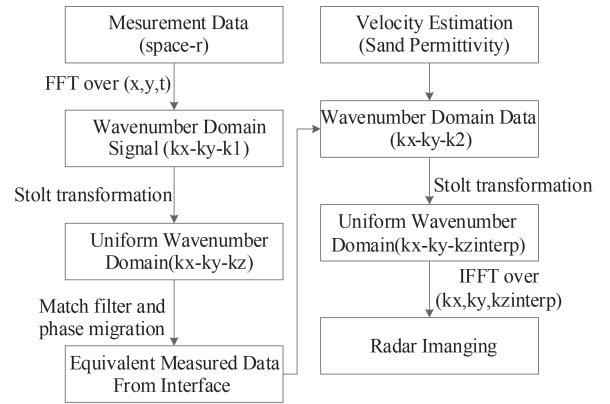
thus, we get,

$$\frac{dk_i}{dk_{z_i}} = \alpha(k_x, k_y, k_{z_i}) = \frac{k_{z_i}}{\sqrt{k_x^2 + k_y^2 + k_{z_i}^2}}. \quad (10)$$

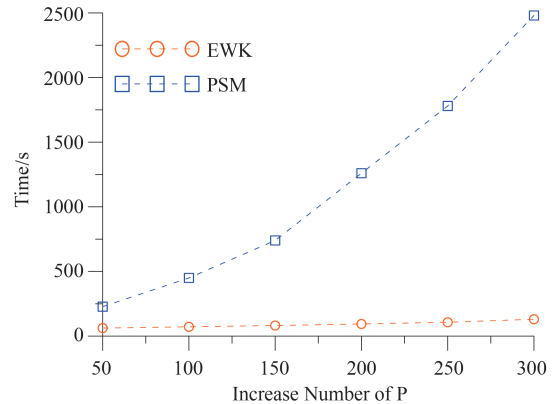
By applying Eq. 8, we shift down the wave field at the top of the second layer, which equals to that the antenna is sampling at layer interface for the targets within second layer. Therefore, by substituting Eq. 8 into Eq. 7, we can use Omega-k algorithm to generate the image within each layer as follows,

$$I_l(x, y, z) = \iiint S \cdot \alpha(k_x, k_y, k_{z_l}) \cdot e^{i(k_x x + k_y y + k_{z_l} z)} dk_x dk_y dk_{z_l}, \quad (11)$$

where S is the wave field at each layer interface. As we know that in frequency wave-number space, if k_x and k_y are defined as uniform, the regular FFT algorithm cannot be directly evaluated on k_z as it is non-uniform. Therefore, a re-interpolation from the k to k_z domain is essential. The imaging procedure for a two-layer medium scenario is summarized in Fig. 2a. With known depth and relative permittivity of each layer, the method can be extended to multi-layer medium imaging.



(a)



(b)

Fig. 2 Two-layer imagery: (a) the diagram of EWK algorithm; (b) the computational complexity with increased number of P
图2 双层介质成像:(a) EWK算法流程;(b)算法计算量与P对应关系示意图

The size of the input data is given by the number of frequency samples (normally also the number of depth pixels), P , the number of measurement positions, M and N . For traditional back-projection method, the complexity is $O(M^2 N^2 P)$, which is far more than EWK and PSM. For PSM and EWK, the asymptotic complexities of FFT operations are the same. However, for PSM, the complexity to iterative generate the image pixel-by-pixel is $O(MNP^2)$, whereas for EWK, the execution complexity by FFT operation is $O(LMNP \log P)$, where L is the medium layer number. When L is limited, it is obvious that

EWK tends to have a lower complexity than PSM with regard to the increased P , as $P \log P < P^2$. Here, we give an example of computational time of PSM and EWK, respectively, shown in Fig. 2b, where P varies from 50 to 300, with $M = N = 71$ and $L = 2$. It is obviously that EWK has a much faster execution speed than the PSM. The execution time is clearly consistent with the aforementioned complexity analysis.

1.3 Velocity estimation

The relative permittivity of the medium is an essential value that determines the wave transmission velocity in the respective medium. Unlike down-looking radar, for a two-layer medium, strong boundary reflection, transmission loss and wave scattering make it difficult to obtain the target curve directly for wave velocity estimation. In this paper, we propose a velocity estimation method based on the vertex region extraction; the reflected signal at the vertex region is highly sensitive to the change in wave velocity due to the multiple mediums. The procedure can be summarized as three steps:

i. Establish image data matrix $G(x, z, v_g)$ referring to velocity change v_g .

Radar transmission speed in the second layer is assumed to be $v_g(i)$ ($v_g(i) = v_{gmin} + i \cdot \Delta v$, $n = 1, 2, \dots, N$) and Δv is velocity interval. Typical underground medium may involve different relative permittivity. Choose a set of B-scan data and substitute $v_g(i)$ into (7) in sequence. Then, we generate the image data matrix $G(x, z, v_g)$ towards v_g .

ii. Extract Target region.

In the data matrix $G(x, z, v_g)$, we define the relative difference function $P_v(x_i, z_j)$ between the normalized average value $Ave(x_i, z_j)$ and the maximum value $P_{max}(x_i, z_j)$ of (x_i, z_j) as below,

$$P_v(x_i, z_j) = P_{max}(x_i, z_j) - \max\{Ave(x_i, z_j), G(x, z, v_1), G(x, z, v_N)\} \quad (12)$$

The target image can be expressed as the point spread function in Sinc function. The difference between the focused image and the defocused image is the peak value. A wrong velocity will blur the image, along with the decrease of the peak amplitude value of the image. For a cluttered area after applying Eq. 12, $p_v(x_i, z_j)$ approximates to zero, because the clutter energy value has little relations with v_g within the medium layer. However, for the target region, the energy is the strongest with the correct wave velocity. Therefore, this value will be significantly strengthened after Eq. 12. We define the normalized $P_v(x_i, z_j)$ as,

$$P_v(x_i, z_j) = \frac{p_v(x_i, z_j)}{\max(abs(p_v(x_i, z_j)))} \quad (13)$$

Then, extract the target region as $C(x_i, z_j)$:

$$C(x_i, z_j) = \begin{cases} 1 & P_v(x_i, z_j) \geq T_1 \\ 0 & P_v(x_i, z_j) < T_1 \end{cases} \quad (14)$$

The region where $C(x_i, z_j) = 1$ corresponds to the curve at vertex region in the radar image, where the main component is the target echo hyperbola with very little clutter influence.

iii. Velocity Curve.

For the cluttered region, the amplitude along the v_g axis decreases or rises monotonically, thus the vertex point typically arrives at v_1 or v_N for monotonic properties; while for the target region, the amplitude appears to be a parabolic curve, the vertex point normally arrives at the central curve. We find the maximum point (x_{max}, z_{max}) , and plot the energy curve $S(x_{max}, z_{max}, v_g)$ refers to the v_g . The maximum value position refers to the correct wave velocity, where the amplitude of the target is best focused after image processing.

2 Experimental validation

To do a realistic validation that EWK can produce high quality image with less time, an experiment with a two-layer structure was conducted as shown in Fig. 3. The ability to detect and image buried objects will depend on soil transmission and scattering. Soils with grain sizes larger than the wave length have low transmittance due to scattering. Dry quartz sand has high transmission in the millimeter wave range due to its fairly uniform grain size, which is smaller than the wavelength of mm Waves.

The diagram shown in Fig. 3 is a simplified view of the main elements and the architecture of the prototype system. The prototype consists of six components: (1) Amplified-multiplier (AMC-i) module; (2) mixer-amplified-multiplier module; (3) Vector Network Analyzer (VNA); (4) software controlling interface; (5) W band antenna; and (6) 2D scanning platform. All components are connected with phase stable cables.

The VDI module extends the frequency range of the 26.5 GHz PNA up to 75~110 GHz via AMC-i. A high direction coupler directs the transmitting signal and reference and measurement receive signals to form the S11 measurements via MixAMC-i. A single 23-dB gain horn antenna with 0.22 rad beam-width is used to transmit and receive the signal. Finally, the transmission coefficient was recorded by the VNA as the scattered data from the targets. Targets of different shapes are tested in the experiments. The ground medium is white sand. The calibrated data are stored and made available in the frequency domain in MATLAB data file format.

Before the experiment, velocity is firstly estimated. The X shape is buried in sand for 15 cm, and the matrix $G(x, z, v_g)$ is generated by using EWK method. The threshold we chose is $T_1 = 0.5$. Note that the T_1 parameter is the threshold to pick the target region out from the completely scanning scenario. In our paper, we use Gray Edge Cutting Method to find a proper T_1 to extract the

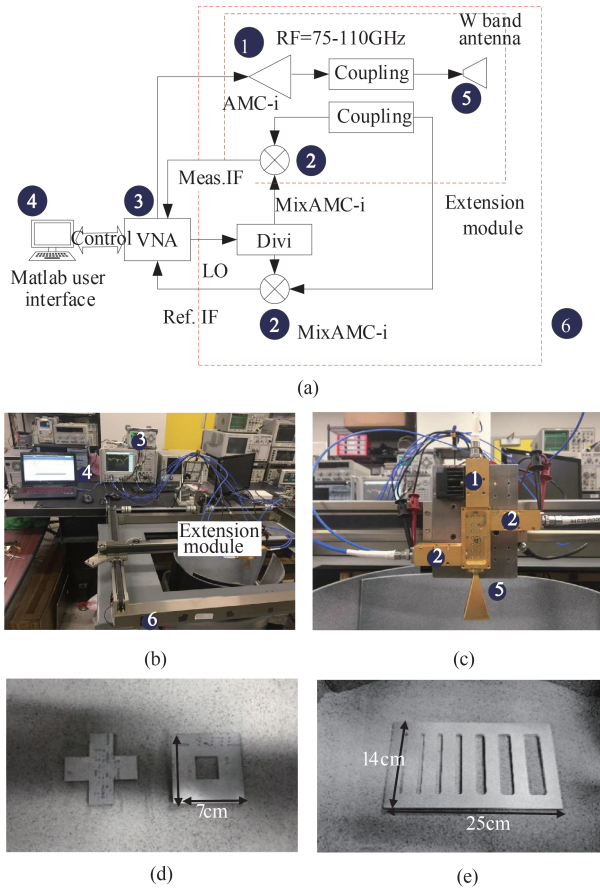


Fig. 3 The standoff GPR design: (a) is the schematic of the circuit design; (b) is the experiment setup; (c) is the extension module; (d) are made of aluminum alloy sized 7 cm×7 cm with smooth surface, and (e) is a resolution plate sized of 25 cm×14 cm, and slot starts from 4 mm to 2.5 cm

图3 探地雷达设计:(a)信号流程图;(b)系统工作示意;(c)扩展模块;(d)被检铝块,尺寸为7 cm×7 cm;(e)被检分辨率板,尺寸为25 cm×14 cm,缝隙间隔从4 mm到2.5 cm

strongest target region for velocity estimation^[11]. Our speed ranges from 5×10^7 m/s to 3×10^8 m/s. The signal energy measured about the target area and clutter area versus v_g is shown in Figs. 4a and 4b. The trend line for the energy measured about the clutter region increases monotonically, whereas the curve for the energy about the target is hyperbolic. The curve crests at 1.8×10^8 m/s. Therefore, the corresponding relative permittivity is $\epsilon_r = 2.78$.

3 Imaging results

We have conducted a couple of measurements to validate the proposed algorithm. In the first experiment, a resolution plate was buried in sand for 8 cm. The image results are shown in Fig. 5. It is evident from Fig. 5a and 5b that the images produced by PSM and EWK are visually similar, and both results are clearly discernible in the images. The calculation time for PSM and EWK are 642 s and 215 s, respectively. The shape of the plate is clearly visible even for the 4 mm slot. The 2D images defocuses a little because the resolution plate is not perfectly placed horizontally. To demonstrate the alignment be-

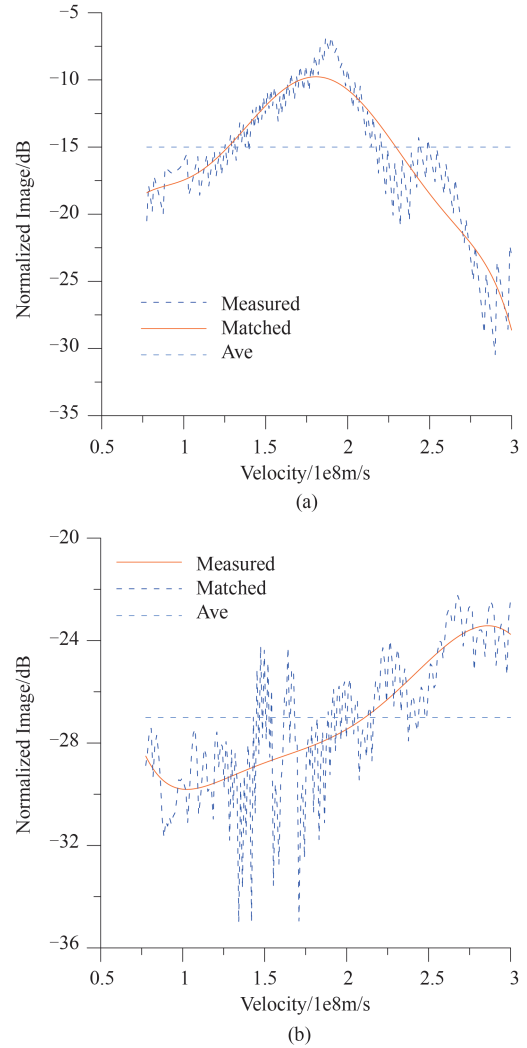


Fig. 4 Velocity estimation: (a) is the target curve and (b) is the clutter curve.

图4 介质波速估计结果:(a)目标区域速度估计曲线;(b)杂波区域曲线

tween target and sand surface, a depth trace through the central region of the targets is drawn in Fig. 5d and the result gives indications of the target depth. The first peak is the system coupling delay; the second peak is the sand reflection, which also represents the distance from transceiver towards sand surface is 40.2 cm; and the third peak is the target position arrives at 51.76 cm, the depth of the measured target is 7.7 cm, which agrees to the buried depth. The reflections from sand surface can also be seen with significant intensity values of -7.7 dB in the image.

In the second experiment, X shape is buried in sand with depth of 10 cm, and O shape is put on the surface of the sand. We covered the sand surface with fresh-cut dry grass. The imaging results are shown in Fig. 6 and both targets and their specific features are clearly visible. As expected, deeper targets have stronger transmission loss, and the loss at 10 cm is around 8 dB in comparison with the O shape. The grass has strong effect on the O shape image because of the attenuation and reflection.

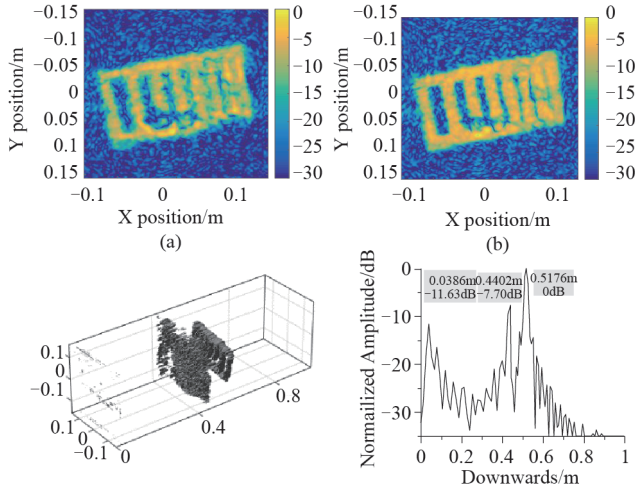


Fig. 5 Results for resolution plate buried in sand for 8 cm. (a) image by PSM, (b) image by EWK, (c) 3D image, and (d) depth trace result
 图5 分辨率板成像结果,掩埋深度 8 cm:(a) PSM 算法成像结果;(b)EWK 算法成像结果;(c)EWK 三维图像结果;(d)一维深度曲线

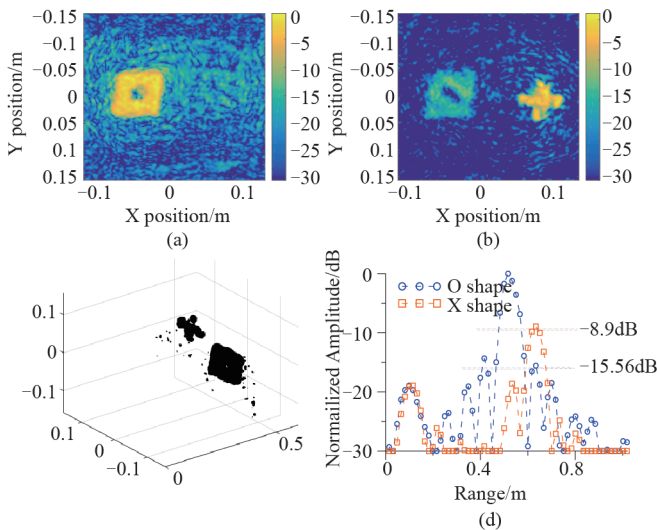


Fig. 6 Results for targets covering with grass and in sand. (a) O shape (b) X shape (c) 3D image, (d) depth trace
 图6 覆盖干草方块成像:(a) O 图形 (b)X 图形 (c)三维图像结果 (d)深度曲线

Unlike SAR image in free-space, the transmission loss in the standoff GPR is proportional to the buried depth. We pick out the maximum pixel of O shape and X shape, respectively, and plot the depth traces in Fig. 6d. The focused position (maximum energy) of O shape is at 52 cm. The focused position of X shape is around 62 cm with maximum energy value of -8.9 dB. However, the side-lobe of O shape at 62 cm is around -15.56 dB. This energy causes a strong ghost in Fig. 6b under the image dynamic range of -30 dB.

Afterwards, we re-buried the X shape target in sand for 15 cm and removed the grass. As shown in Fig. 7, the image quality is greatly improved without grass, the

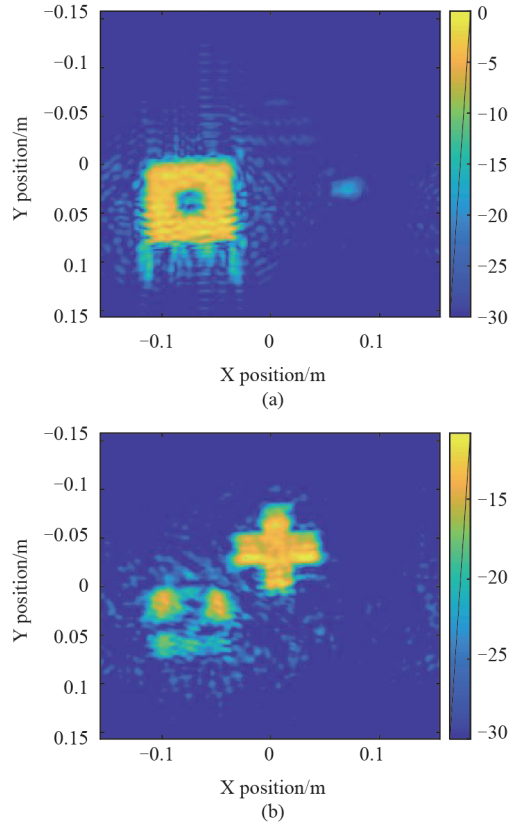


Fig. 7 Without grass and X shape is buried for 15 cm. (a) O shape and (b) X shape
 图7 去除干草方块成像:(a) O 图形;(b)X 图形

maximum energy of X shape is -11 dB due to higher transmission loss. Large bandwidth not only provides superior range resolution, also it helps to reduce the interference from the environment at a given range and to provide better azimuth resolution.

We compare our work with current state art of work^[12]. Our system is demonstrated without focusing lens, which is more easily for practical deployment. Furthermore, the depth we can detect is deeper than that in Ref. [12]. In this paper, we have shown imaging of targets under laboratory conditions with dry sand. Thus, a system with higher dynamic range or lower frequency could be of great interest in future investigations of GPR imaging in practical scenarios with higher transmission losses and air/soil reflection losses.

4 Conclusions

In summary, by integrating the Omega-k method into the PSM, this paper presents a new EWK method for multi-layer medium imaging along with a velocity estimation method for two-layer medium. The algorithm can achieve imagery using Omega-k method with transmission velocity changes. We have shown theoretically that the algorithm has lowered computational complexity compared to the PSM algorithm with increased number of range intervals. The algorithm is formulated in 3D and been implemented for both 2D and 3D applications on synthetic data from a W band GPR prototype. Both 2D

and 3D images of the data were presented. Images formed using the algorithm provide well-focusing features of the targets, even very close scattering mechanisms can be easily distinguished. The new method offers a promising faster solution with high fidelity, which provides the potential for various applications.

References

- [1] ZHANG Peng, Zhang Xiao-Juan. A Novel Through-the-Wall Imaging Algorithm Combined with Phase Shift Migration and NUFFT [J]. *Chin. J electron*, 2017, **26**(5): 1096–1100.
- [2] Jung, Haewon, Kang Woong, Kim. Kangwook. Multilayer Stolt Migration Algorithm for Subsurface Target Imaging in Oblique Layers [J]. *IEEE J of Selected Topics in Applied Earth Observations and Remote Sensing*, 2016, **10**(10): 4295–4304.
- [3] Gazdag, Jenö. Wave equation migration with the phase-shift method [J]. *Geophysics*, 1978, **43**(7): 1342–1351.
- [4] GU Kun-Long, WANG Gang, LI Jian. Migration based SAR imaging for ground penetrating radar systems. Algorithms for Synthetic Aperture Radar Imagery X[C]. Orlando, Florida, United States, 2003.
- [5] Sevket Demirci, Enes Yigit, Ismail H. Eskidmir, et al. Ground penetrating radar imaging of water leaks from buried pipes based on back-projection method [J]. *NDT&E International*, 2012, **47**: 35–42.
- [6] Sevket Demirci, Enes Yigit, Ismail H. Eskidmir, et al. Synthetic aperture focusing of ultrasonic data from multilayered media using an Omega-k algorithm [J]. *IEEE Trans. on ultrasonics, ferroelectrics, and frequency control*, 2012, **47**: 35–42.
- [7] R. H. Stolt. Migration by Fourier transform [J]. *Geophysics*, 1978, **43**(1): 23–48.
- [8] Sheen, David, Douglas L. McMakin, Thomas E. Hall. Three-dimensional millimeter-wave imaging for concealed weapon detection [J]. *IEEE Trans on microwave theory and techniques*, 2001, **49**(9): 1581–1592.
- [9] Ristic, A. Vaso, Dusan Petrovacki, Miro Govedarica. A new method to simultaneously estimate the radius of a cylindrical object and the wave propagation velocity from GPR data [J]. *Computers & Geosciences*, 2009, **35**(8): 1620–1630.
- [10] Conde, Olga M, Jesús Pérez, M. P. Catedra. Stationary phase method application for the analysis of radiation of complex 3-D conducting structures [J]. *IEEE Trans on Antennas and Propagation*, 2001, **49**(5): 724–731.
- [11] Otsu, N. A threshold selection method from gray-level histograms [J]. *IEEE Trans on systems, man, and cybernetics*, 1979, **9**(1): 62–66.
- [12] B. Du, W. Todd, Jose M, et al. Millimeter wave imaging system for the detection of nonmetallic objects [J]. *Applied optics*, May. 2016, **45**(22): 5686–5692.